

## Mole Species in North America



Star-Nosed Mole

### Star-Nosed Mole

#### Physical Characteristics

- Length (head to tail): 150-200 mm
- Weight: 30-75 grams

#### Interesting Attributes:

- 22 pinkish “tentacles” extend from the nose and are extremely sensitive
- Prefers very wet areas and is not typically found in lawns and gardens



Range



Hairy-tailed Mole

### Hairy-tailed Mole

#### Physical Characteristics

- Length (head to tail): 140-175 mm
- Weight: 40-85 grams

#### Interesting Attributes:

- Prefer dry and loose dirt
- Feet can become almost pure white with age



Range



Eastern Mole

### Eastern Mole

#### Physical Characteristics

- Length (head to tail): 125-200 mm
- Weight: 70-130 grams

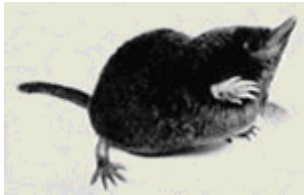
#### Interesting Attributes:

- Most common mole in North America
- Almost identical to the Coast Mole and the larger Townsend's Mole



Range

## Mole Species in North America (continued)



Eastern Mole

### American Shrew Mole

#### Physical Characteristics

- Length (head to tail): 100-125 mm
- Weight: 50-80 grams

#### Interesting Attributes:

- Smallest mole in North America
- Does not create mole hills



Range



Coast Mole

### Coast Mole

#### Physical Characteristics

- Length (head to tail): 140-200 mm
- Weight: 9-11 grams

#### Interesting Attributes:

- Virtually indistinguishable from Townsend's Mole except for its smaller size
- Rare albino specimen found in British Columbia



Range



Townsend's Mole

### Townsend's Mole

#### Physical Characteristics

- Length (head to tail): 200-240 mm
- Weight: 100-160 grams

#### Interesting Attributes:

- Largest and heaviest of all moles
- Thought to consume more vegetation than most moles



Range



**MAKERS OF AMERICA'S FINEST™  
NATURAL REPELLENTS**

MOLE SCRAM is a registered trademark of  
Enviro Protection Industries Co., Inc..  
27 Link Drive, Suite C, Binghamton, 13904

## Mole Species in North America (continued)



**Broad-footed Mole**

### Broad-footed Mole

#### Physical Characteristics

- Length (head to tail): 120-170 mm
- Weight: 65-90 grams

#### Interesting Attributes:

- Though to be the most solitary of all moles
- Primarily nocturnal



Range